

Tech Spec & Ground Plans

- Old Clubhouse

Technical Planning

Technical Questionnaire

To help us plan to meet your requirements, please complete your Technical Questionnaire, accessible from the Performers' Area of the Underground Website:

- underthefringe.com/artists/tech

You can update your responses at any time, but we need to know your **main requirements and of any special requirements by June 19th.**

Tech Rehearsal

Most shows will be given a time slot as close to the day of your first performance as possible to use as your technical rehearsal and/or sound check. During this time, an Underground technician will be available to assist with get-in, teach the use of the equipment, and/or learn your show if you have requested an operator. You may use this time as you wish, and may or may not choose to have a run-through of the performance.

If you are unable to attend the Tech Rehearsal at the times we have set, we will probably not be able to find a different slot, since the venue is in constant use, and we have limited time in the space. Our tech team will try and help you outside the space in any way they can, time permitting.

Technical charges

Our standard technical equipment, rehearsal time and technical assistance for your get-in and get-out are included in your basic fee. Additional costs apply for:

- A technical operator to operate cues for your show – **£15 per hour per performance** (minimum £15)
 - or, **£7.50** for shows with just 'lights up/lights down' at either end of the show, with no monitoring during
- Use of Underground's projector – **£5 per performance**

We can arrange additional rentals for you from our suppliers at competitive prices; please contact us for details.

Stage

The Old Clubhouse stage is rectangular in shape with a slight alcove at the back. It is 5400mm wide at the front, the depth is 3170mm.

There is a small amount of wing space on either side which may be used to store props and set pieces for the duration of the performance only. Storage space in the Old Clubhouse outside of your performance times will be limited, so please let us know if you're planning on bringing anything substantial that will have to be kept in the venue.

Please note that there is no backstage crossover, so it's not possible to move between the wings without going across the stage.

> See the Ground Plan at the end of this document.

Lighting

The lighting rig is mostly fixed in the Clubhouse, with no power for additional fixtures on the main overhead lighting bars. Unfortunately we are not able to move or refocus any of the fixed rig due to turn around times between performances.

There are however two boom arms positioned auditorium left and right respectively with two channels each of 15amp dimming that are available for artist specials.

The main rig consists of a set of fixed 26 degree Quartet profiles for stage left and stage right facelight on an advance bar, along with a 1kw 18/32 degree Cantata profile for a central spot. Over the stage, there is a bar of 6 Quartet fresnels for a warm and a cold wash, and 4 RGB LED PAR cans for coloured backlight. There are also two RGB LED battens on the floor that are primarily used to uplight the drapes for comedy and musical acts.

If you have any specific requests regarding lighting, or wish to bring your own equipment, please get in touch with us as soon as possible to discuss this.

The lighting desk is an ETC Nomad, with a Zero88 Jester available for busking. During your technical rehearsal, an Underground technician will be present to help program your lighting for you.

If you require an operator, Underground can supply one for an additional fee, who will operate your show from a copy of your script marked up with cues.

We highly recommend that you send us a digital copy of your script with cues marked in advance, and bring a copy printed off for the operator at the time of your technical rehearsal.

> See the Lighting Plan at the end of this document.

Sound

A selection of wired microphones, along with DI boxes for instruments, are available, but are shared between Underground's venues - if you require use of such equipment, please let us know as soon as possible so that we can manage our equipment schedules.

We will provide a MacBook running the latest version of QLab, the standard sound playback software for the industry. If you are bringing tracks to play, please provide them on a USB stick at the time of your technical rehearsal. Alternatively, you are welcome to bring your own laptop for sound playback.

Please note we no longer provide a CD or MiniDisc player in The Clubhouse.

Our audio system features a pair of Meyer speakers for the main L/R, as well as a powered subwoofer beneath the lip of the stage. There is also a pair of monitors available.

Projection

An Optoma GT5000+ Ultra Short Throw Projector is mounted onstage, with a projection screen available for projection.

A CAT5 cable is run from stage to the control position for KVM control of the projector. The projection may be run via Qlab from the Underground Venues Macbook providing the visual content is in a standard image or video format such as .jpeg or .mp4.

If you have a PowerPoint Presentation we recommend you bring your own laptop to run it. We have the facility to run VGA or HDMI from either the stage or tech position.

Power

Power in the Old Clubhouse is quite limited - please let us know if you think you will require power onstage, for example if you have your own guitar amp, or a practical lamp that will be onstage, and we will attempt to accommodate you. 13A (domestic) or 16A plugs are preferred for anything requiring hard power, or 15A plugs are preferred for any practical lamps that require a dimming circuit. Again, Underground owns some adaptors, but cannot guarantee that we will have the specific adaptors necessary to connect anything non-standard.

Technical Contact

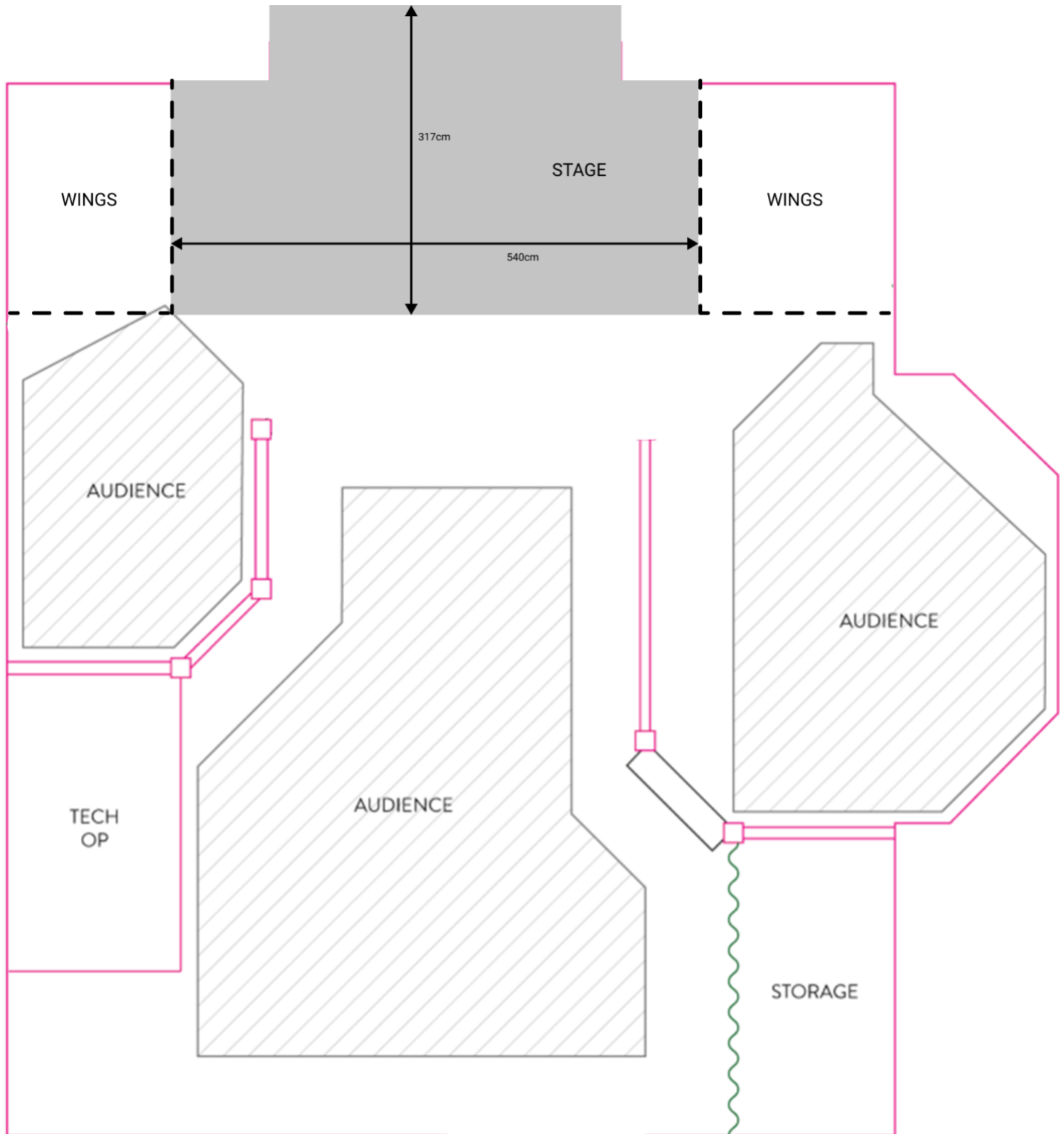
If you have any queries or problems in relation to the technical aspects of your show, Underground's Technical Manager **Dylan Howells** will provide answers or solutions.

tech@undergroundvenues.co.uk

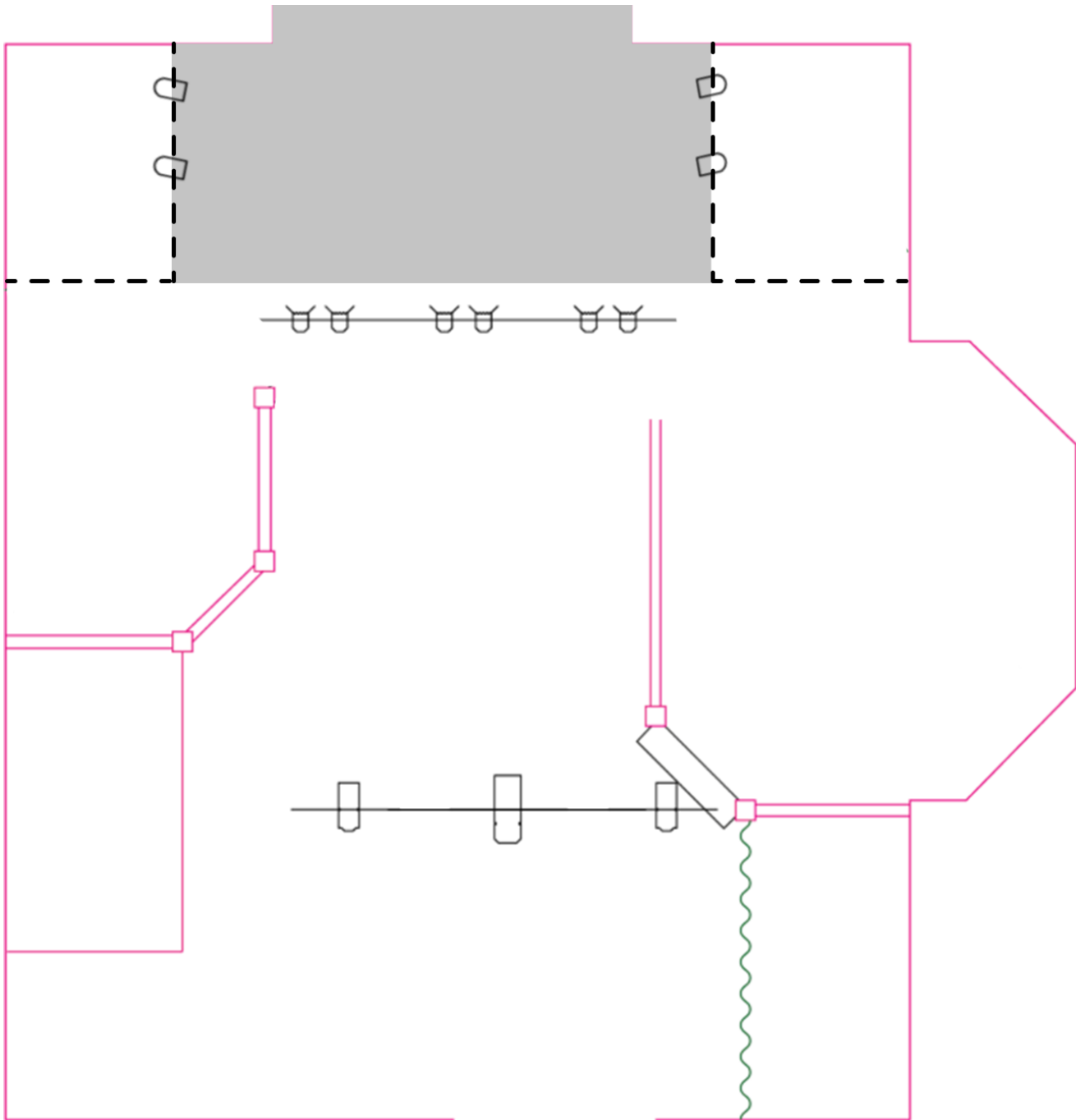
In particular, please get in touch **before accepting our contract** if you're uncertain whether your technical plans will match the specifications detailed above.

Ground Plan

Please note it is not possible to cross from one side of the space to the other behind the stage.



Lighting Plan



= 1kw Profile



= LED Parcan



= 650w Profile



= 650w Fresnel



= LED Batten